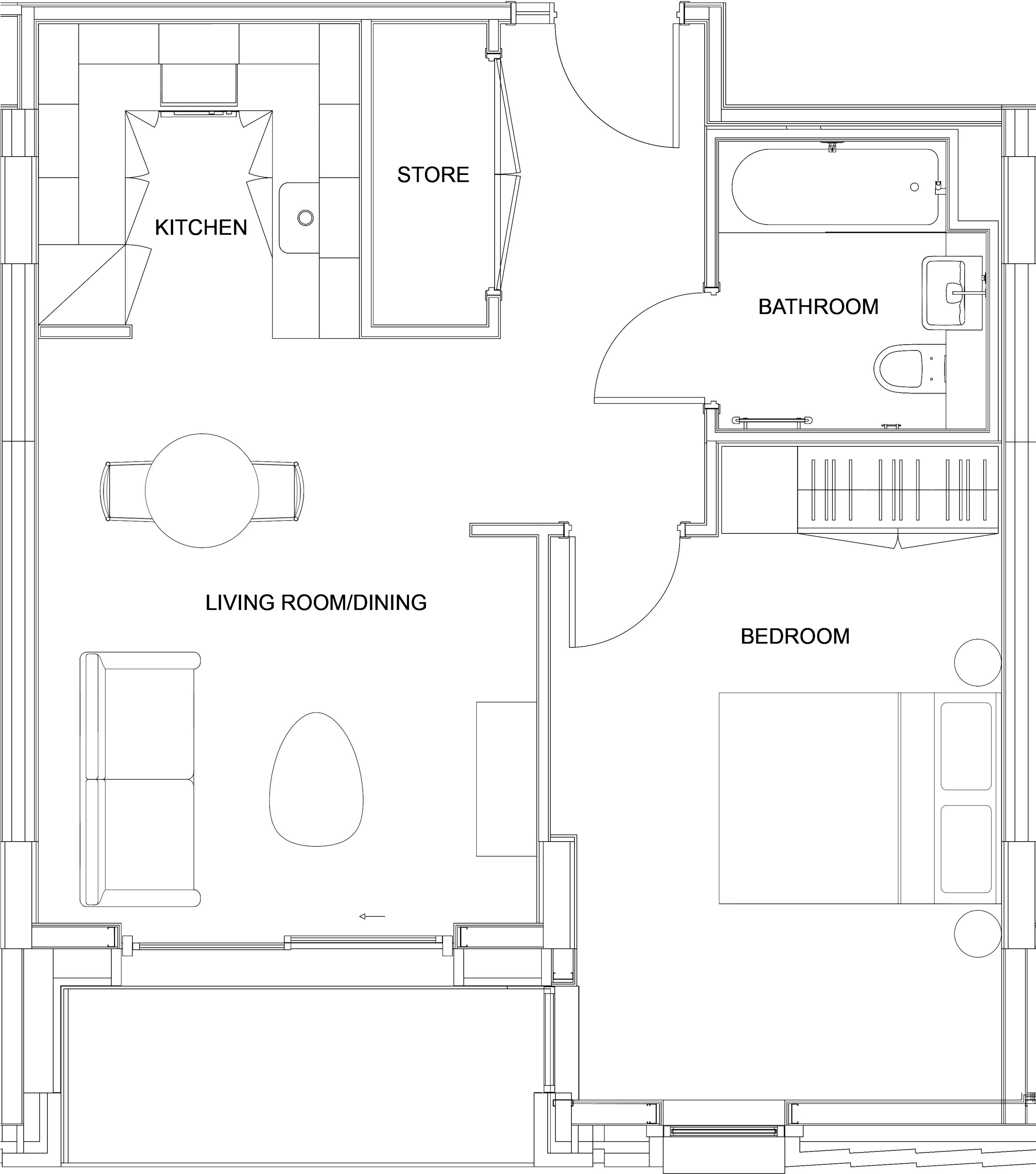


# TYPE A

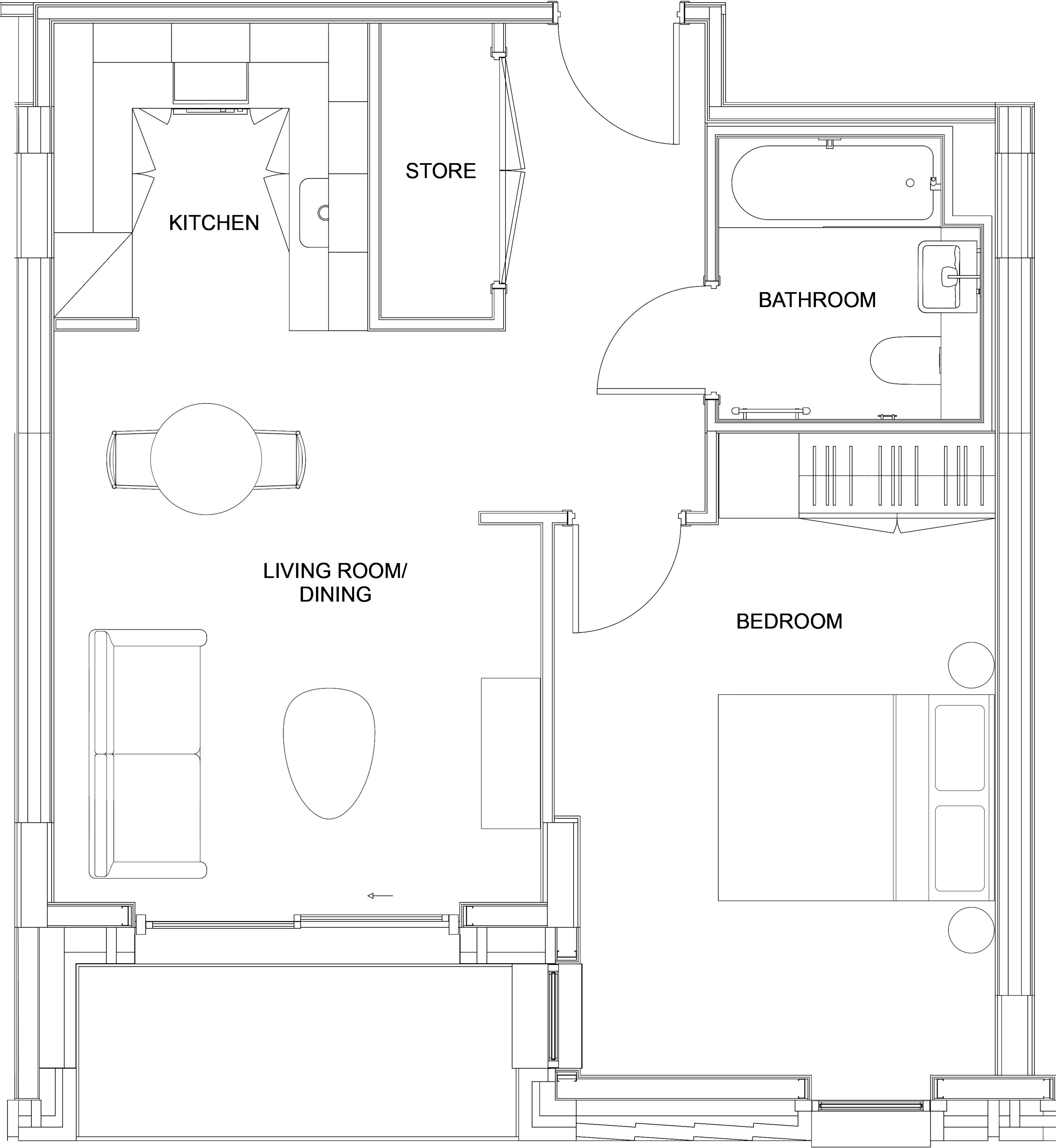


PRESENT  
*MADE*

*Every effort has been made to ensure the accuracy of this floor plan. However, measurements are approximate, and no responsibility is taken for any errors or omissions. It is for illustrative purposes only.*



# TYPE A1

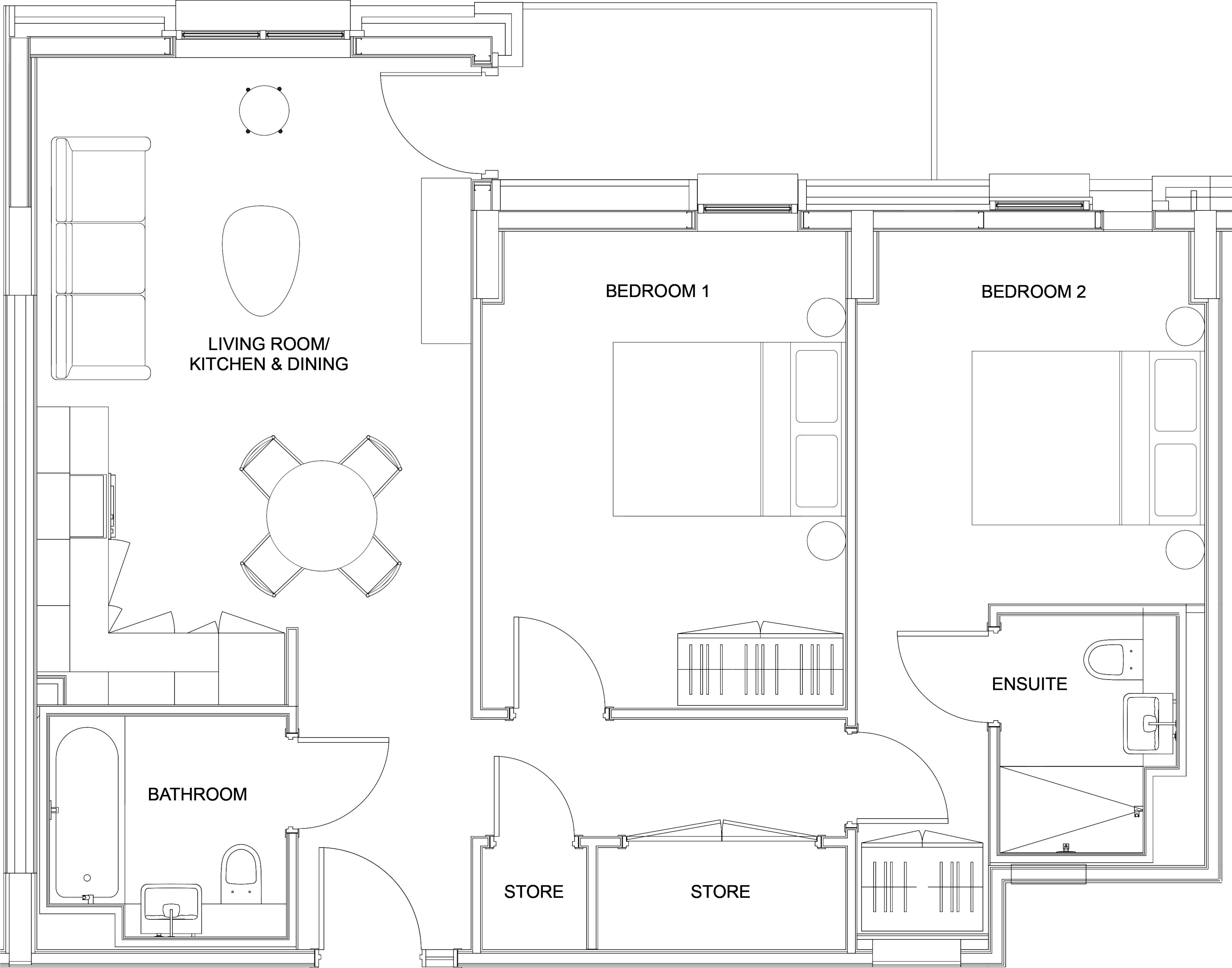


PRESENT  
*MADE*

*Every effort has been made to ensure the accuracy of this floor plan. However, measurements are approximate, and no responsibility is taken for any errors or omissions. It is for illustrative purposes only.*



# TYPE E1

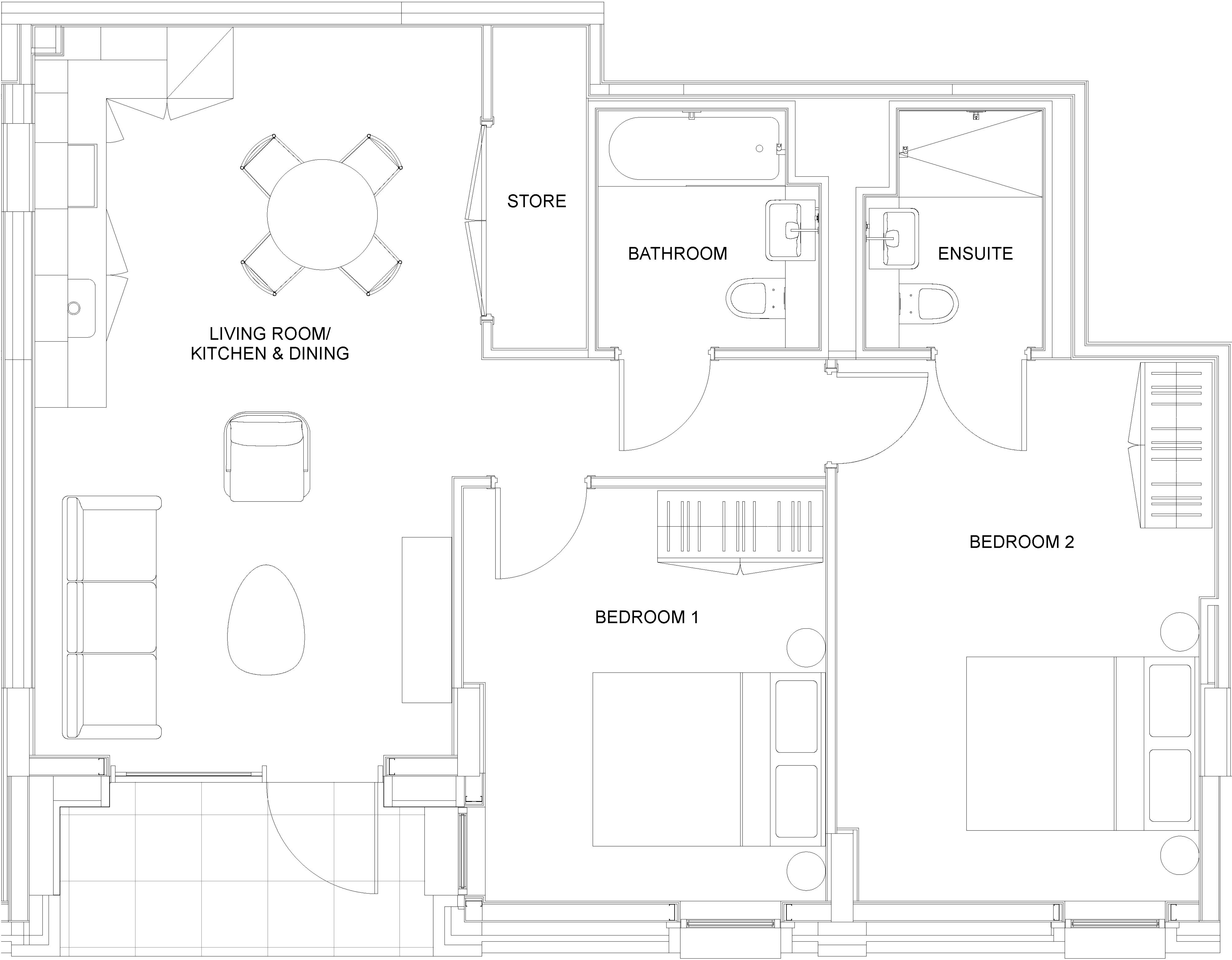


PRESENT  
*MADE*

*Every effort has been made to ensure the accuracy of this floor plan. However, measurements are approximate, and no responsibility is taken for any errors or omissions. It is for illustrative purposes only.*



# TYPE Z



PRESENT  
*MADE*

*Every effort has been made to ensure the accuracy of this floor plan. However, measurements are approximate, and no responsibility is taken for any errors or omissions. It is for illustrative purposes only.*



# TYPE F

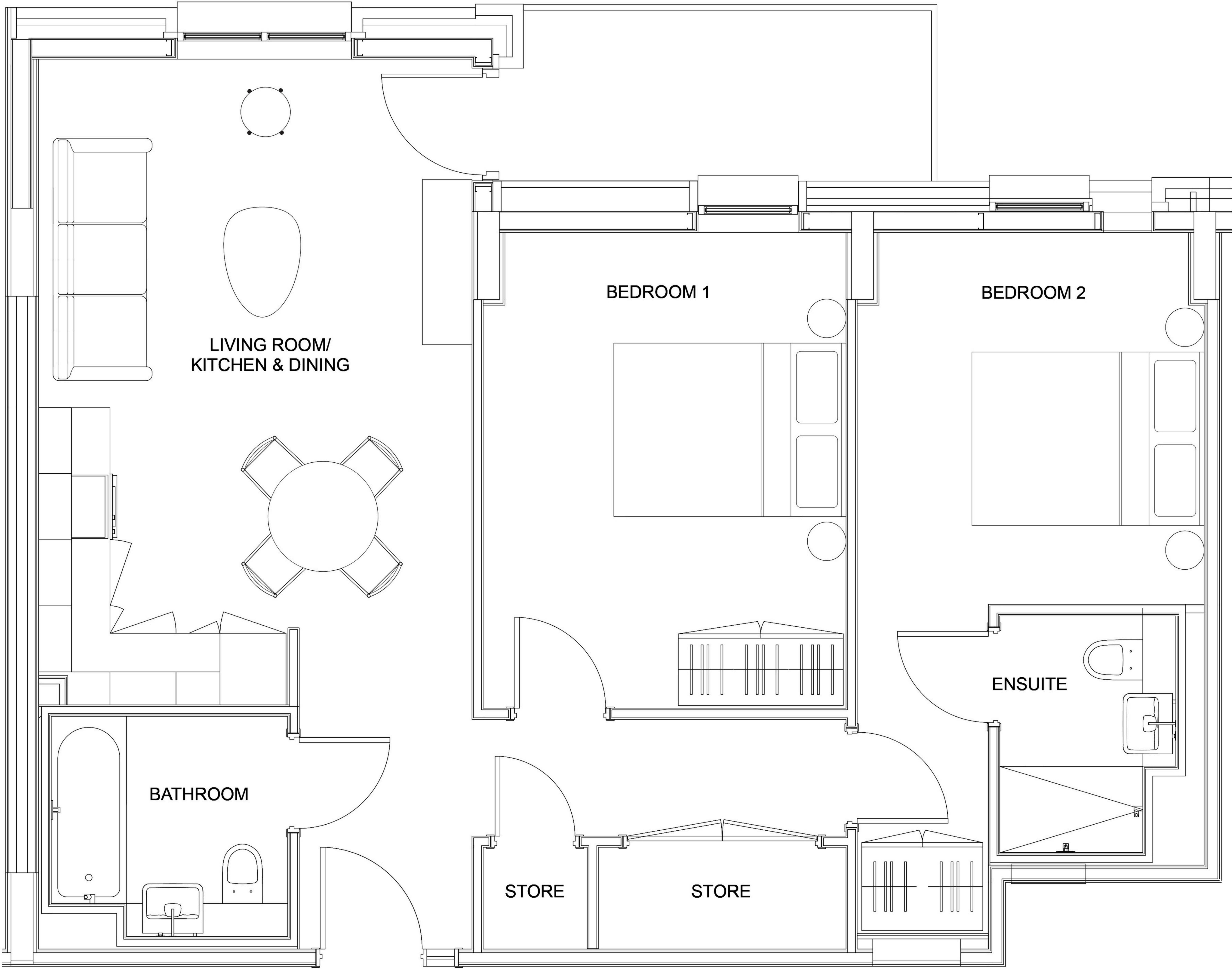


PRESENT  
*MADE*

*Every effort has been made to ensure the accuracy of this floor plan. However, measurements are approximate, and no responsibility is taken for any errors or omissions. It is for illustrative purposes only.*



# TYPE E3

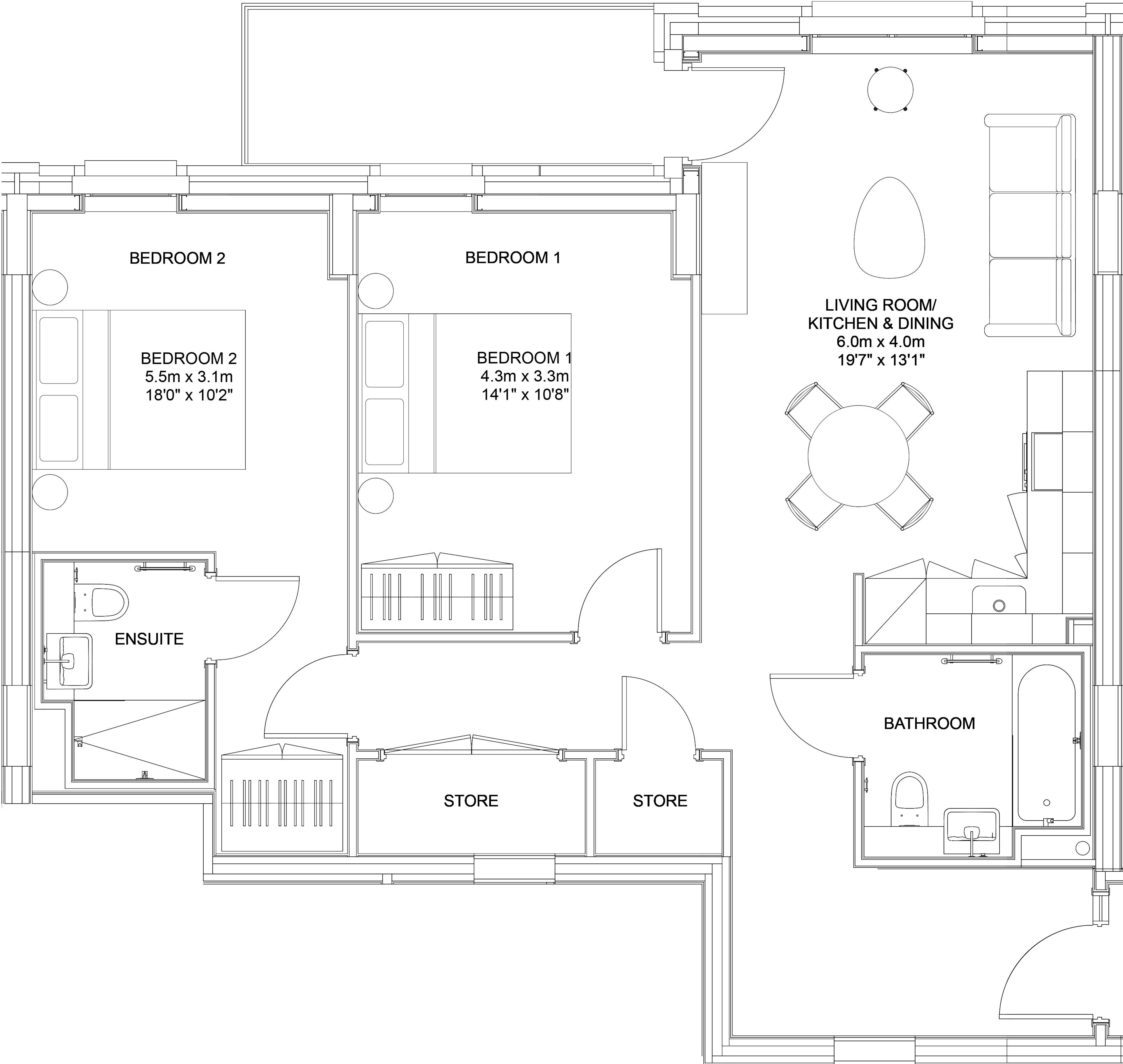


PRESENT  
*MADE*

*Every effort has been made to ensure the accuracy of this floor plan. However, measurements are approximate, and no responsibility is taken for any errors or omissions. It is for illustrative purposes only.*



# TYPE E2-H

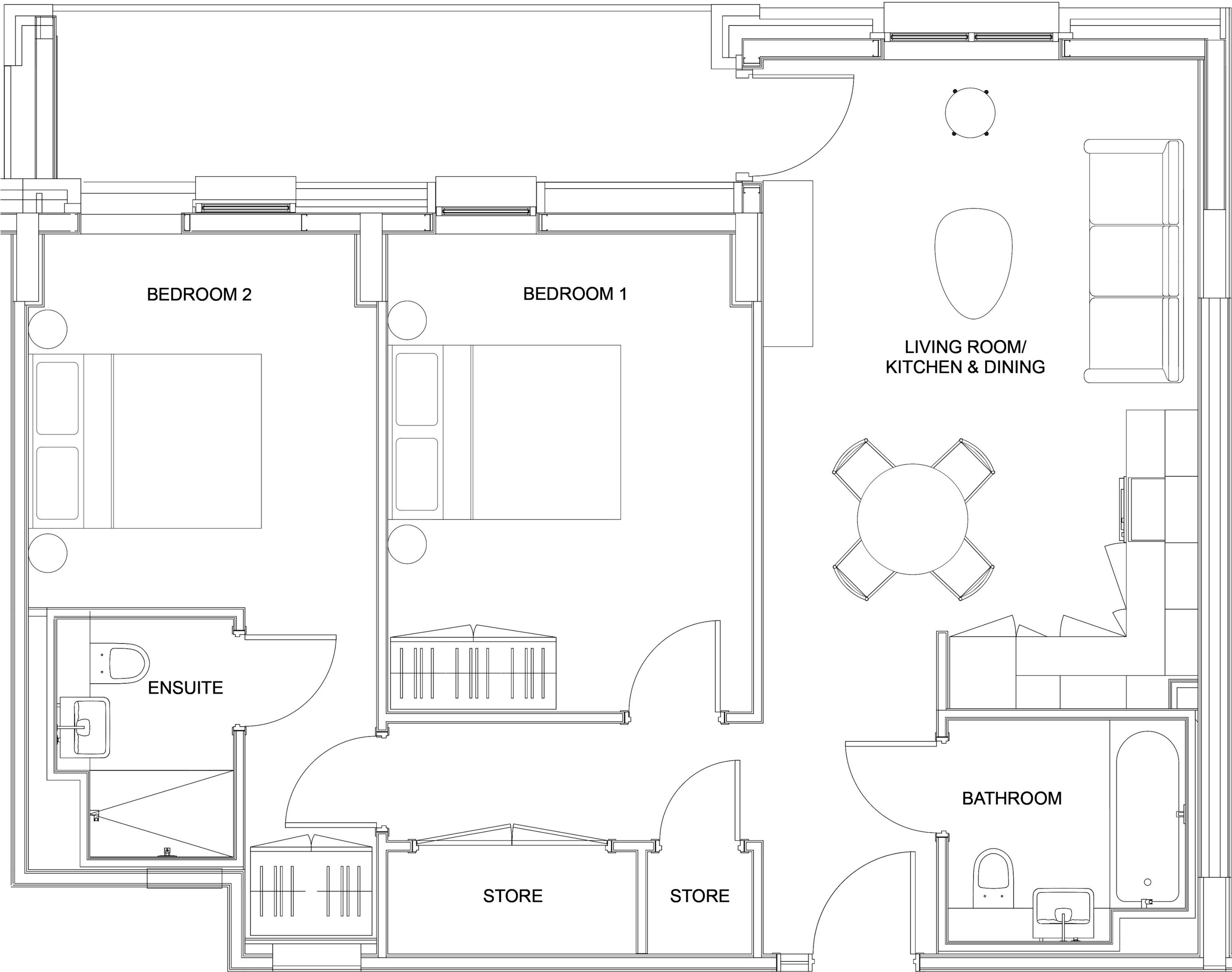


**PRESENT**  
*MADE*

*Every effort has been made to ensure the accuracy of this floor plan. However, measurements are approximate, and no responsibility is taken for any errors or omissions. It is for illustrative purposes only.*



# TYPE E-H



PRESENT  
*MADE*

*Every effort has been made to ensure the accuracy of this floor plan. However, measurements are approximate, and no responsibility is taken for any errors or omissions. It is for illustrative purposes only.*