

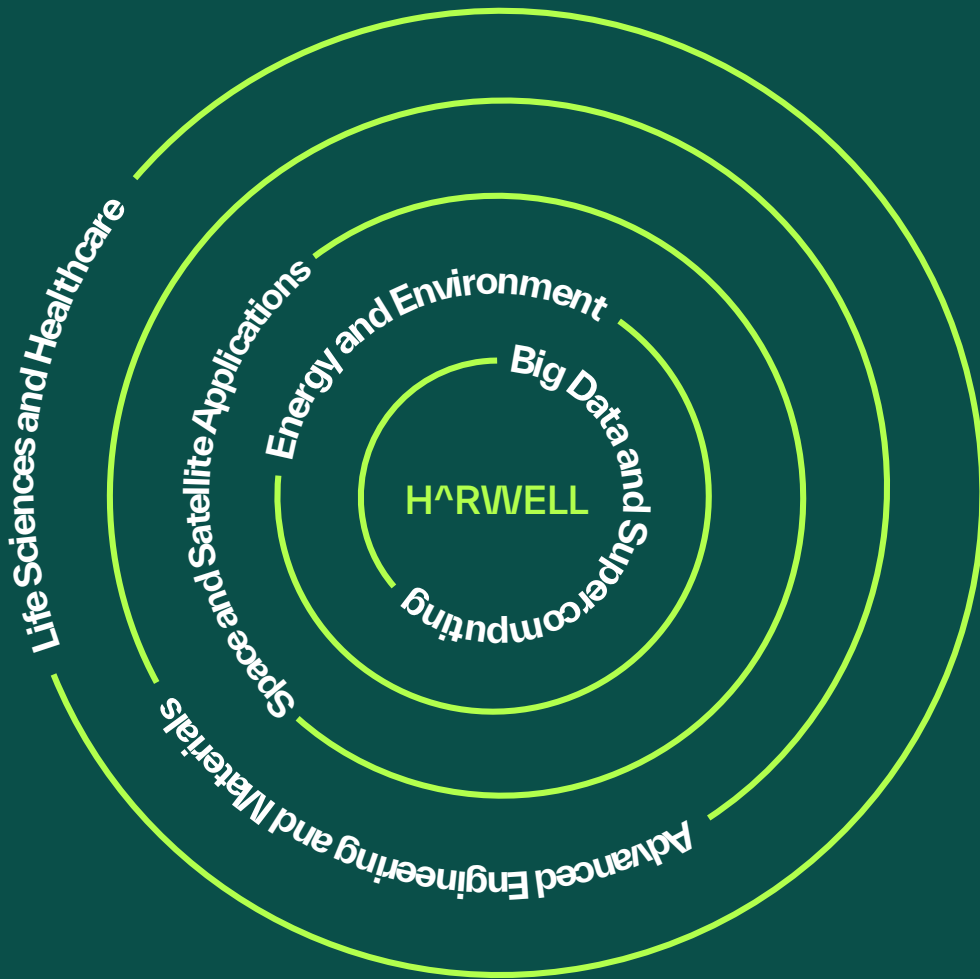
# Airspeed 1

**FULLY REFURBISHED  
OFFICES TO LET**

**1,118 sq ft to 2,741 sq ft available**

**HARWELL**





Nowhere else on Earth offers Harwell's unique combination of world-leading talent and facilities

2,741 sq ft of fully refurbished office suites are available to let within the Airspeed 1 Building

Making tomorrow brighter than today

# The UK's home of innovation

**“It’s often the intersection, the collision of different people with different takes on problems, which creates wholly new ways of looking at things and solving problems.”**

**Professor Andrew Harrison CEO,  
Diamond Light Source**

Harwell is where the world of tomorrow is taking shape. Fast becoming one of the world's largest and most important science and innovation locations, it's a community of 6,000 people, including scientists, engineers and innovators, collaborating on many of the world's most advanced technologies, and delivering breakthroughs that will transform lives worldwide.

The campus is home to national and international institutions including The Science and Technology Facilities Council, The European Space Agency, Public Health England and the UK Space Gateway. Harwell is founded on a legacy of groundbreaking innovations, from Europe's first nuclear reactor in 1947, and the world's first transistorised computer in 1953, to the Diamond Light Source synchrotron in 2007.

With exceptional individuals from more than 60 countries and worldleading open access facilities on one site, Harwell is a hotbed of cross-sector innovation. This is a community in every sense of the word, designed for living as well as working, with an international outlook and a uniquely collaborative culture.

Business and professional development is a priority here, with an active approach to nurturing collaboration through open days, forums and networking events. Ambitious plans for future growth include millions more square feet of commercial and technical space, accommodating thousands of the world's brightest and most dedicated

scientists and engineers. A wealth of global scientific and engineering talent is readily accessible on-site, and in nearby Oxford, London and Cambridge, the UK's golden triangle. Business and professional development is a priority here, with an active approach to nurturing collaboration through open days, forums and networking events.

Ambitious plans for future growth include millions more square feet of commercial and technical space, accommodating thousands of the world's brightest and most dedicated scientists and engineers.

A wealth of global scientific and engineering talent is readily accessible on-site, and in nearby Oxford, London and Cambridge, the UK's golden triangle.

---

**700 ACRES**

---

**6,000 PEOPLE**

---

**200+ ORGANISATIONS**

---

**TALENT FROM OVER 60 COUNTRIES**

---



# Airspeed 1

Airspeed 1 is prominently located on Eighth Street and forms part of the Heritage collection of buildings. The buildings are perfectly located for the new gym, deli and DiSH offering as part of the increasing Campus amenity offering.

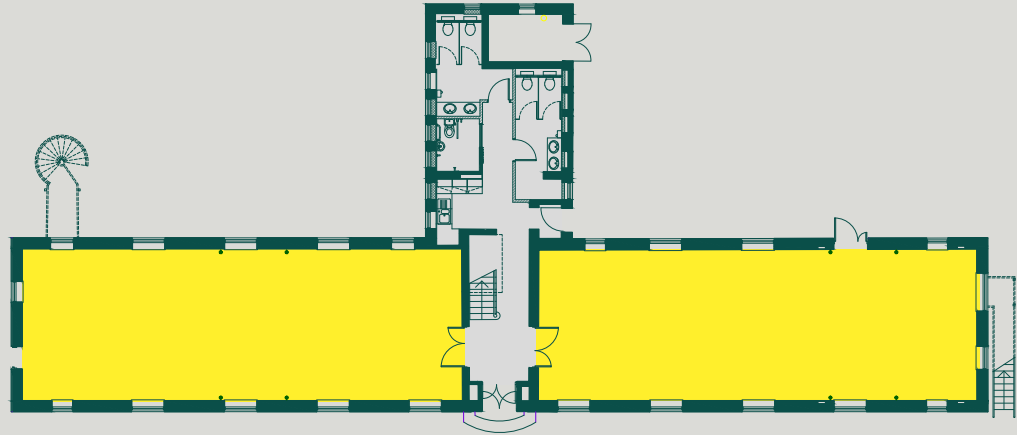
The building is comprehensively refurbished to provide Grade A standard, suitable for office and laboratory use. The refurbishment preserves the building's character, combining features such as high ceilings, LED lighting and access controls.

### Specifications

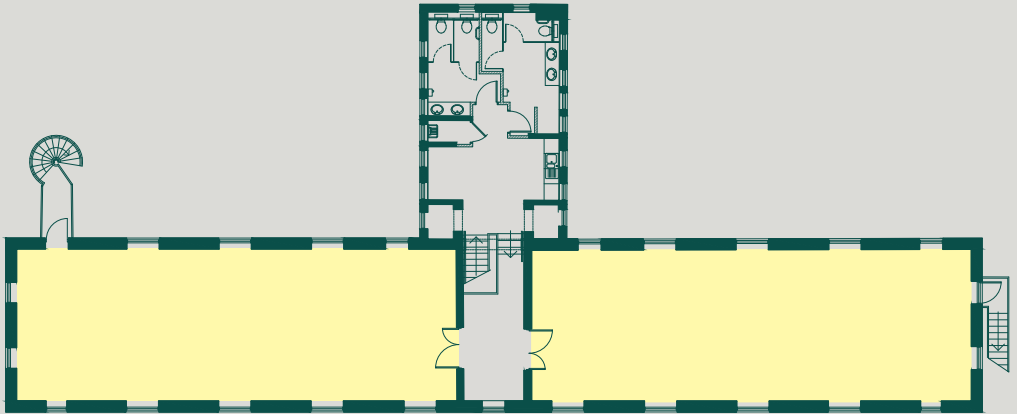
- LED lighting
- New ceiling system
- New flooring
- New WCs
- Kitchenette and tea point
- Easy access to all new on-site amenities
- Dedicated car parking



Ground floor



First floor



- Available units
- Let units

	Sq ft	Sq m
Ground floor	2,741	255
First floor	2,865	266
<b>TOTAL</b>	<b>5,606</b>	<b>521</b>



Harwell is located in beautiful countryside just south of Oxford, one of the fastest growing cities in the UK.

Oxford city centre is just over 20 minutes, drive away, Heathrow is 55 minutes by road, and nearby Didcot Parkway station connects you to London Paddington in just 42 minutes.

The launch of Crossrail and the upgrade to the Didcot Parkway Line mean it will soon be possible to reach central London Underground stations in under one hour.

#### Road distances

Didcot Parkway	London
5m/15mins	60m/1hr 26mins
Oxford	Bristol
15m/23 mins	70m/1hr 13mins
Heathrow	Birmingham
50m/55mins	90m/1hr 31mins

#### Train distances via Didcot

Reading	Bristol
13mins	1hr 2mins
London Paddington	Birmingham
42mins	1hr 29mins

Shuttlebus service through the day to Didcot Parkway and Oxford

Satnav reference: OX11 0QB  
Source: RAC, National Rail Enquiries

# Contact us

## BIDWELLS

### George Brown

george.brown@bidwells.co.uk  
+44 (0) 1865 985628  
+44 (0) 7881 664483

### Robert Beatson

robert.beatson@bidwells.co.uk  
+44 (0) 1865 592627  
+44 (0) 7976 590996

## JLL

### James Finnis

James.Finnis@eu.jll.com  
+44 (0) 2082 832534  
+44 (0) 7788 188863

### Paddy Shipp

Paddy.Shipp@eu.jll.com  
+44 (0) 2070 875357  
+44 (0) 7469 155531

## LAMBERT SMITH HAMPTON

### Kevin Wood

kwood@lsh.co.uk  
+44 (0) 1865 200244  
+44 (0) 7900 584150

### Charlotte Reaney

creaney@lsh.co.uk  
+44 (0) 1865 200244  
+44 (0) 7841 684842

**“Harwell Campus is an established and important hub for the very best of European space and science technology. The European Space Agency’s decision to base itself there underlines the quality of the facility and shows the high regard that the industry has for Harwell. I’m delighted to see it first hand and be part of its success. It’s always exciting to visit Harwell Campus, I can’t wait to be back.”**

**Major Tim Peake  
Astronaut**



# HARWELL

Harwell Oxford Management Limited or Bidwells or Lambert Smith Hampton or JLL give notice that these property particulars are provided as a general outline for guidance only. Intending purchasers or tenants should not rely on them as statements or representations of fact, but must satisfy themselves by inspection or otherwise as to their accuracy. As such, it does not constitute or form part of a contract. No person in the employ of Harwell Oxford Management Limited or Bidwells or Lambert Smith Hampton as representing agents of the property displayed has the authority to make or give any representation or warranty in relation to the property. Unless otherwise stated, all rents and prices quoted in these property particulars are exclusive of VAT which may be payable in addition to the amount quoted. Subject to contract. December2021

[harwellcampus.com](http://harwellcampus.com)

[in harwellcampus](#)

[harwellcampus](#)