



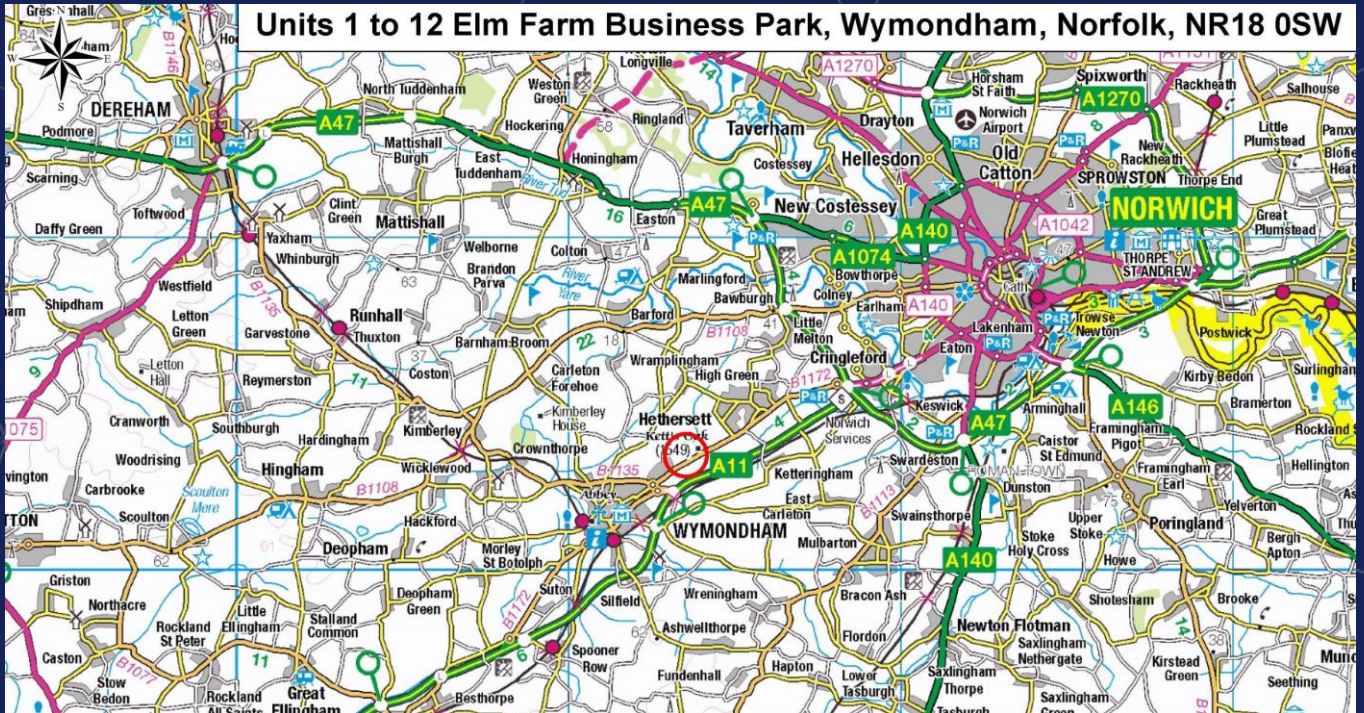
UNIT 4 ELM FARM BUSINESS PARK, WYMONDHAM, NR18 0ZF

**TO LET | LAST UNIT REMAINING
1,465 SQ FT (136 SQ M)**

- Conveniently located on the old A11 between Norwich and Wymondham
- Complete with office, kitchen and WC facilities
- Benefitting from solar panels
- Available now

LOCATION

The Business Park is situated on the old A11 between Hethersett and Wymondham, approximately 6 miles west of Norwich and within 1.5 miles of the main trunk road (at Wymondham). The property therefore provides excellent access to the main A11 and from there to the Norwich southern Bypass. **Sat Nav - NR18 0SW**



SUMMARY

Description

The construction of the units is now complete. There are two terraces of steel portal frame units and a separate detached unit (unit 1).

The units will be fitted out with an entrance lobby, office with kitchen and WC facilities once an occupier confirms that is the layout they require.

There is the option of having a different layout and an additional fit out. The difference cost of which will be borne by the Tenant.

There will be an up and over door, personnel entrance, forecourt for unloading as well as forecourt parking.

The warehouse areas are column-free, with concrete floors and an eaves height (CIH)* of 4.37m with an apex height of 5.63m, 3 phase 100AMP power, water and foul services are all provided.

Each unit benefits from a solar array and the occupant will benefit from the power generated. There are also roof lights

BT/FTTC connections will also be brought to the units.

Unit 12 is an office building please contact the agent for further details.

There are yards at the front for loading, unloading and car parking.

Floor loading to have a minimum compressive strength of 35N/mm².

Energy Performance Certificate

We are advised that the units will have an A rated EPC.

Terms

New full repairing and insuring leases are available for terms to be agreed.

Rent upon application.

Accommodation

The units have the following gross internal floor areas:

	Sq M	Sq ft	Parking
Unit 1	209.00	2,250	5 LET
Unit 2	138.22	1,488	4 LET
Unit 3	136.01	1,464	4 LET
Unit 4	136.14	1,465	4
Unit 5	136.14	1,465	4 Under offer
Unit 6	136.14	1,465	4 Under offer
Unit 7	138.48	1,491	4 LET
Unit 8	208.26	2,242	6 LET
Unit 9	135.33	1,457	4 LET
Unit 10	135.20	1,455	4 LET
Unit 11	208.00	2,239	6 LET
Total	1,716.92	18,481	49

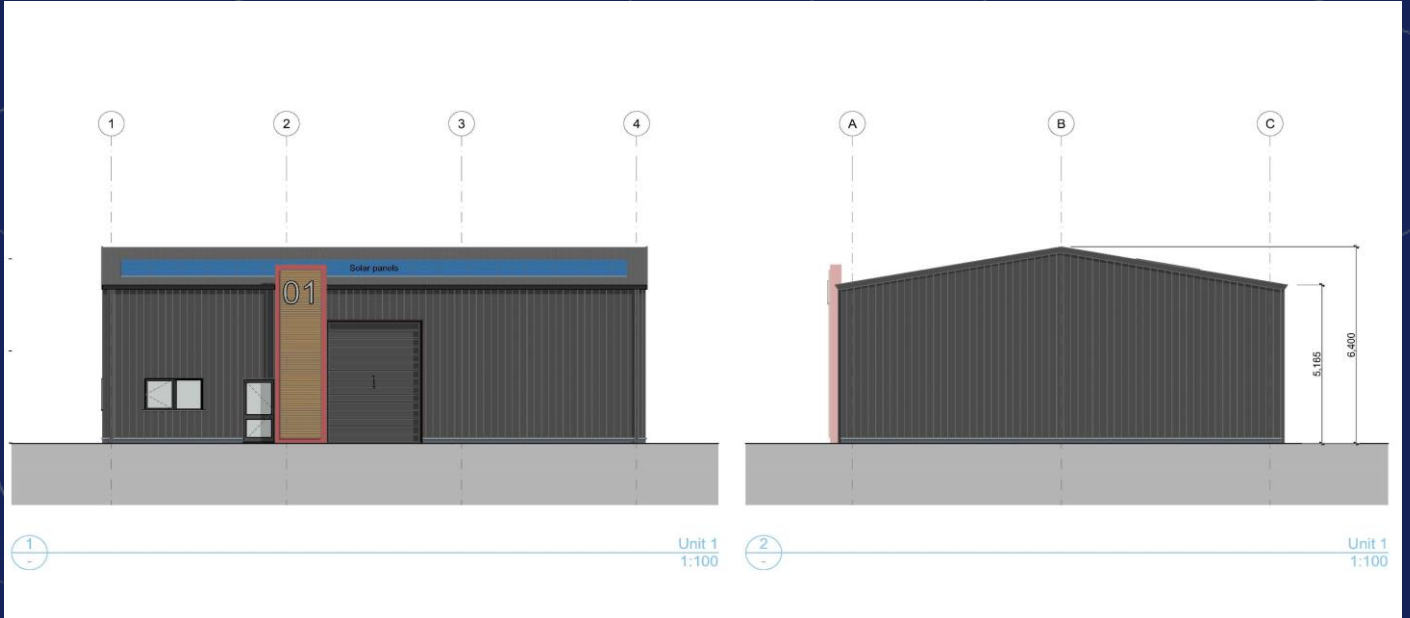
***Clear Internal Height (CIH) - The height between the structural floor surface and the underside of the lowest point of the structural ceiling or roof.**

GALLERY



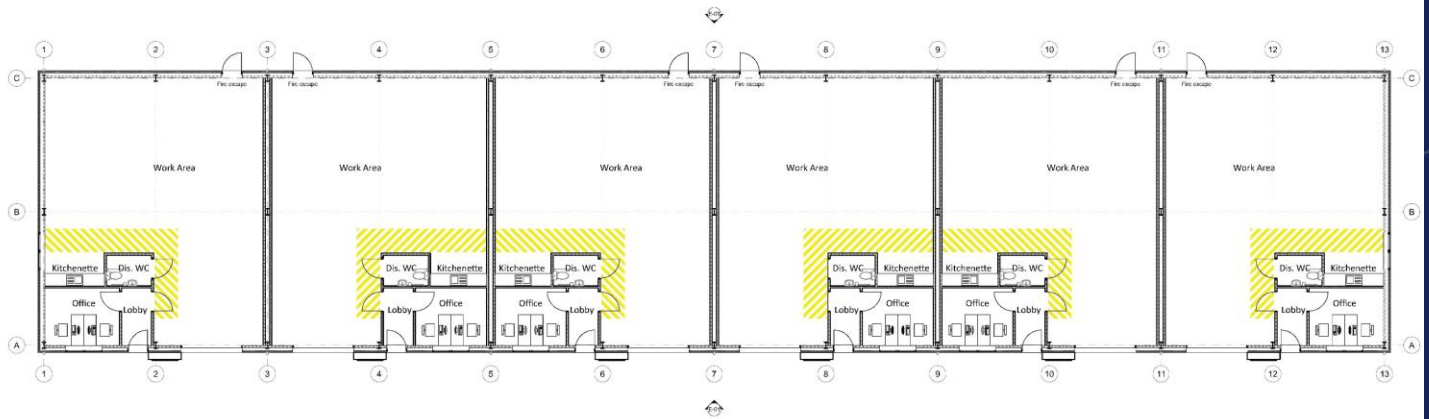
GALLERY



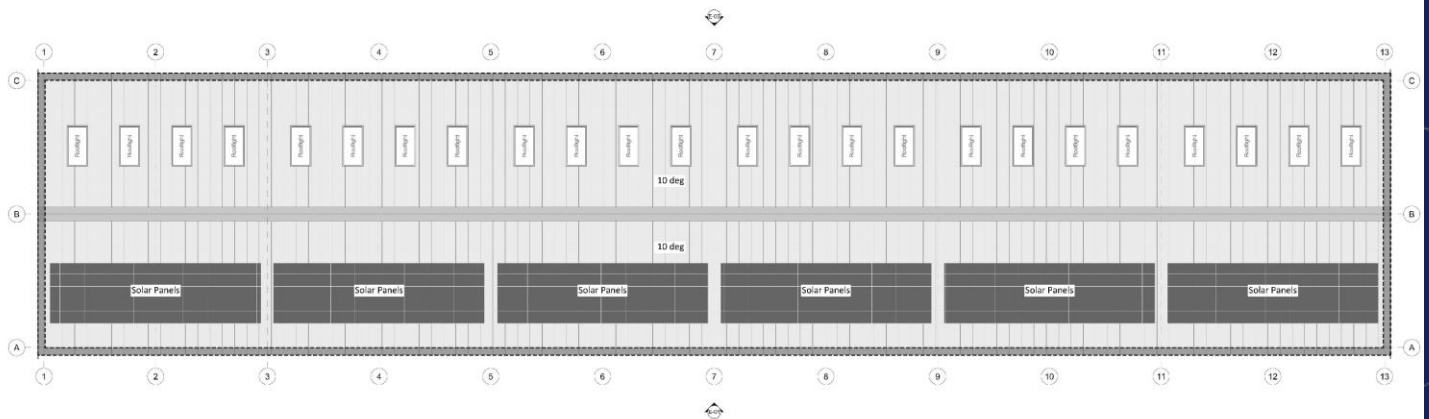


Unit 1 Side Profile





GF-Ground Floor



RF-Roof

March 2025

Enquiries

Chris Squirrell

07887 830124

chris.squirrell@bidwells.co.uk

William Jones

07899 061892

william.jones@bidwells.co.uk

Joint agent

Nick O'Leary

07725 372577

nick.oleary@arnoldskeys.com

Important notice

Bidwells LLP act for themselves and for the vendors/landlords of this property, whose agents they are, give notice that:

Nothing contained in these particulars or their contents or actions, both verbally or in writing, by Bidwells LLP form any offer or contract, liability or implied obligation to any applicants, viewing parties or prospective purchasers of the property to the fullest extent permitted by law and should not be relied upon as statements or representative of fact. No person in the employment of Bidwells LLP or any joint agents has authority to make or give any representation or warranty whatever in relation to this property. Any areas of measurements or distances are approximate. The text, photographs and plans are for guidance only, may not be to scale and are not necessarily comprehensive. No assumptions should be made that the property has all necessary planning, building regulation or other consents. Bidwells LLP has not carried out a survey, nor tested the services, appliances or facilities. Purchasers must satisfy themselves by inspection or otherwise. All rentals and prices are quoted exclusive of VAT unless otherwise stated.

Prospective purchasers and tenants will be asked to produce identification of the intended purchaser/tenant and other documentation in order to support any conditional offers submitted to the vendors. Bidwells LLP accepts no liability of any type arising from your delay or other lack of co-operation. We may hold your name on our database unless you instruct us otherwise.