



Exciting opportunity to rent a commercial office unit with excellent transport links to Cambridge and the surrounding area

- Leasehold
- Approximately 2,150 SQFT
- Refurbished in 2019
- Easy access to the A10
- On-site parking

**OFFICE/POTENTIAL LAB SPACE – TO LET
UNIT 2, DENNY LODGE BUSINESS PARK,
CHITTERING, CAMBRIDGE, CB25 9PH**

LOCATION

- Located in the hamlet of Chittering
- 8 miles north of Cambridge
- 8 miles south of Ely
- 4.5 miles north of Waterbeach train station

DESCRIPTION

Commercial letting.
Approximately 2,150sq. ft. (GIA office space)

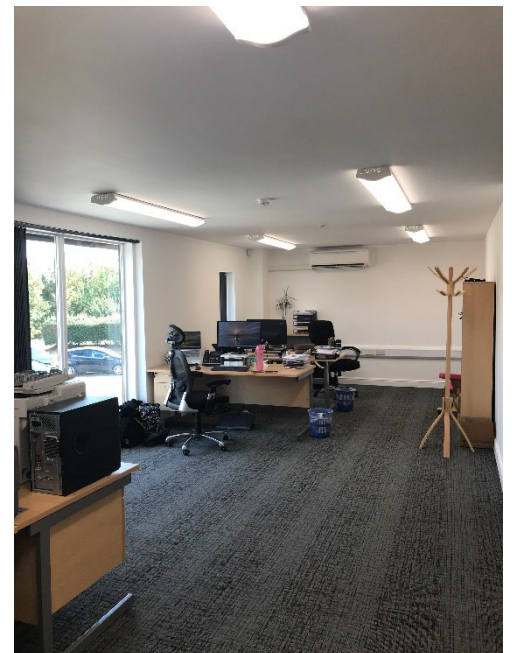
Located on the Chittering Estate, Unit 2 Denny Lodge Business Park offers high-spec office space over ground and first floor.

The Unit was refurbished in 2019 and includes;

- Two ground floor board rooms
- Two open plan offices on first floor
- WC's located on ground and first floor
- Shower room
- Modern fitted kitchen
- On site parking
- External communal areas

KEY FEATURES

- Rural setting
- Car parking
- Communal courtyard
- Security alarm system
- Air-conditioning (Hot/Cold)
- Fire/Alarm panel
- Male & Female WC
- Independent Kitchen
- Electric gate access
- Business Park CCTV
- 300Mbps Virgin internet bandwidth



Additional information

Viewings strictly subject to appointment.

ENQUIRIES

Rebecca Mothersole
Rebecca.Mothersole@bidwells.co.uk
07779567688

Bidwells, Bidwell House, Trumpington Road, Cambridge, CB2 9LD

Important Notice

Bidwells LLP act for themselves and for the vendors of this property, whose agents they are, give notice that: Nothing contained in these particulars or their contents or actions, both verbally or in writing, by Bidwells LLP form any offer or contract, liability or implied obligation to any applicants, viewing parties or prospective purchasers of the property to the fullest extent permitted by law and should not be relied upon as statements or representative of fact. No person in the employment of Bidwells LLP or any joint agents has authority to make or give any representation or warranty whatever in relation to this property. Any areas of measurements or distances are approximate. The text, photographs and plans are for guidance only, may not be to scale and are not necessarily comprehensive. No assumptions should be made that the property has all necessary planning, building regulation or other consents. Bidwells LLP has not carried out a survey, nor tested the services, appliances or facilities. Purchasers must satisfy themselves by inspection or otherwise. All rentals and prices are quoted exclusive of VAT unless otherwise stated. Prospective purchasers may be asked to produce identification of the intended Purchaser and other documentation in order to support any conditional offers submitted to the vendors. Bidwells LLP accepts no liability of any type arising from your delay or other lack of co-operation. We may hold your name on our database unless you instruct us otherwise.

OS licence no. ES 100017734. © Copyright Bidwells LLP 2017. Bidwells LLP is a limited liability partnership registered in England and Wales (registered number OC 344553). Registered office is Bidwell House, Trumpington Road, Cambridge CB2 9LD where a list of members is available for inspection. Your statutory rights are not affected by this notice.