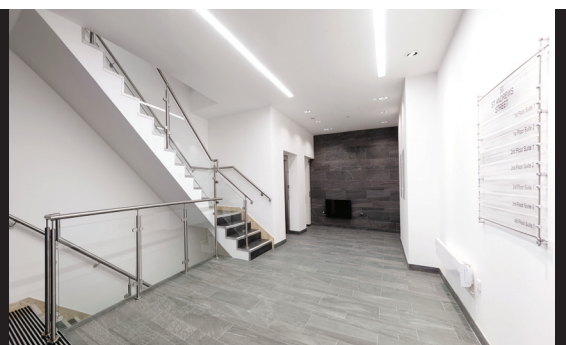


50

ST ANDREWS STREET
CAMBRIDGE



THIRD FLOOR SUITE
TOTALING 3,175 SQ FT
IN MODERN OFFICE BUILDING





Floor plan

LOCATION

50 St Andrews Street is located on one of the main thoroughfares into Cambridge City Centre, opposite the historic Emmanuel College and adjacent to the green open space provided by Parkers Piece.

The offices are within just a few minutes' walk of both the city centre and Cambridge train station. Cambridge train station provides fast and frequent rail links to London, with King's Cross just 50 minutes away and London Liverpool Street, just 1 hour and 15 minutes. Public transport to the building is excellent, with Drummer Street bus station (Cambridge's main bus depot) just a few minutes' walk.

DESCRIPTION

50 St Andrews Street provides modern efficient office space over four floors. The third floor suite overlooks Parkers Piece and the College grounds. The suite has been finished to a high standard with full air conditioning throughout, perimeter trunking and LG7 lighting. The building benefits from a lift and shower.

The suite is currently fitted and can either be taken as is or open plan by way of negotiation.

AVAILABILITY

Third Floor

3,175 sq ft

LEGAL

Each party are to bear their own legal costs.

BUSINESS RATES

All interested parties are advised to make their own enquiries of Cambridge City Council on 01223 457 000.

EPC

EPC available on request.

TO VIEW AND FOR FURTHER INFORMATION PLEASE CONTACT



George Craig | 07779 770902
george.craig@bidwells.co.uk

Jack Vestey | 07971 770409
jack.vestey@bidwells.co.uk

IMPORTANT NOTICE

Bidwells LLP act for themselves and for the vendors/landlords of this property, whose agents they are, give notice that: Nothing contained in these particulars or their contents or actions, both verbally or in writing, by Bidwells LLP form any offer or contract, liability or implied obligation to any applicants, viewing parties or prospective purchasers of the property to the fullest extent permitted by law and should not be relied upon as statements or representative of fact. No person in the employment of Bidwells LLP or any joint agents has authority to make or give any representation or warranty whatever in relation to this property. Any areas of measurements or distances are approximate. The text, photographs and plans are for guidance only, may not be to scale and are not necessarily comprehensive. No assumptions should be made that the property has all necessary planning, building regulation or other consents. Bidwells LLP has not carried out a survey, nor tested the services, appliances or facilities. Purchasers must satisfy themselves by inspection or otherwise. All rentals and prices are quoted exclusive of VAT unless otherwise stated.

Prospective purchasers and tenants will be asked to produce identification of the intended purchaser/tenant and other documentation in order to support any conditional offers submitted to the vendors. Bidwells LLP accepts no liability of any type arising from your delay or other lack of co-operation. We may hold your name on our database unless you instruct us otherwise.

OS licence no. ES 100017734. © Copyright Bidwells LLP 2017. Bidwells LLP is a limited liability partnership registered in England and Wales (registered number OC 344553). Registered office is Bidwell House, Trumpington Road, Cambridge CB2 9LD where a list of members is available for inspection. Your statutory rights are not affected by this notice. October 2021. Designed by Philosophy Design 020 7324 1300