

# SPACE FOR YOUR INVESTMENT COMPANIES TO GROW

We support science and technology businesses in finding suitable workspaces and fitting them out. By leaning on us for their real estate strategies, they can focus on the science - giving them the best chance for success, and therefore a quicker return on your investment.

#### What we do

We've assisted scaling businesses on their journey, from seed funding to maturity, selecting and delivering award-winning lab and office spaces that are cultivating innovation and driving commercial success.

#### Why us

Our unrivalled local market data, and fifty-year track record in the science and technology sector, allows us to support investment portfolios with a pipeline of workspace for rapidly expanding R&D and technology businesses.

#### Services snapshot

- Real estate strategy and site selection
- Refurbishment and fit-out of technical R&D space
- Project management
- Planning advice





**BIDWELLS**

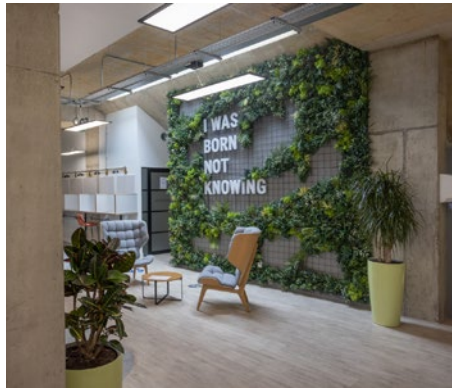
**“OSE would not hesitate to recommend the Bidwells team. Simply put, we would not want to undertake a project without them.”**

**Pete Wilder, Head of Property, Oxford Science Enterprises**



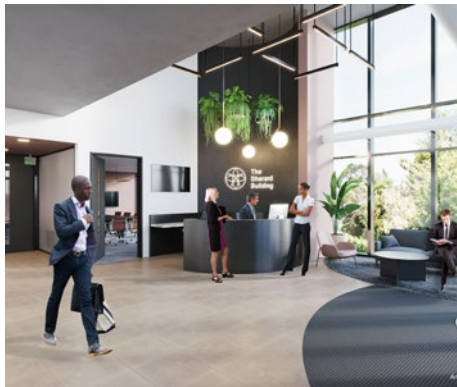
**SENSE BIODETECTION, CAMBRIDGE**

We helped Sense find and then repurpose industrial / mid-tech space into suitable cleanroom lab, office, manufacturing, and distribution space - all under one roof.



**OSE, GRASSROOTS, OXFORD**

We delivered an award-winning open-plan hub, flexibly configured to accommodate incubation and accelerator spaces for post-graduate enterprises.



**OSE, SHERARD BUILDING, OXFORD**

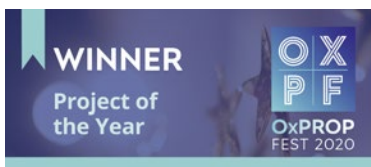
We project managed the repurposing of office to flexible lab space at the heart of The Oxford Science Park for three tenant companies - Exact Sciences, T-Cypher and Theolytics.



**OSE, SCHRÖDINGER BUILDING, OXFORD**

Specialist accommodation for three of Oxford Science Enterprises' emerging life science portfolio companies - OMass Therapeutics, Orbit Discovery and Nucleome Therapeutics. The space promotes collaboration and cross-fertilisation of ideas.

**Award-winning lab spaces**



**About us**

Bidwells is a leading property consultancy with a science and technology focus across the Golden Triangle of Oxford-Cambridge-London.

Global investors and occupiers come to us for advice because we know our markets, how specialist laboratories are built, and how science and tech occupiers think. It's knowledge that has been built up over five decades, advising 60 of the region's science and innovation parks and many of the businesses occupying them.



Contact us for support with your investment portfolio's real estate:

**Max Bryan**

Strategy and Site Search  
max.bryan@bidwells.co.uk  
07793 808 114

**Phil Kentish**

Fit-out and Refurbishment  
philip.kentish@bidwells.co.uk  
07918 725 660

[bidwells.co.uk/vc](http://bidwells.co.uk/vc)