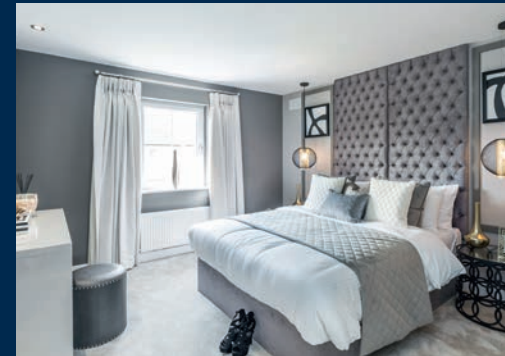


THE BRAMPTON

THREE BEDROOM HOME



Individual plots may vary, please speak to the Sales Adviser



The Brampton is designed over three floors creating a home for flexible modern living. The ground floor consists of a family room and a kitchen with dining area. Both have French doors to the garden.

The lounge is located on the first floor along with the family bathroom and one of the three double bedrooms, while two further bedrooms including the master with en suite are on the second floor.



DAVID WILSON HOMES

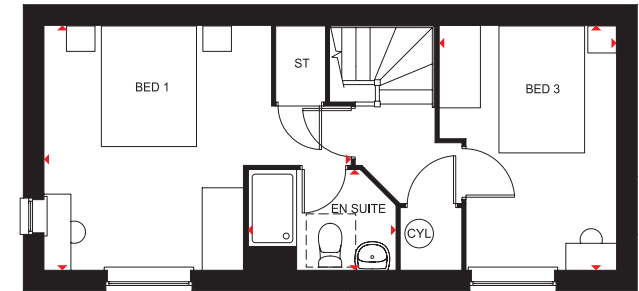
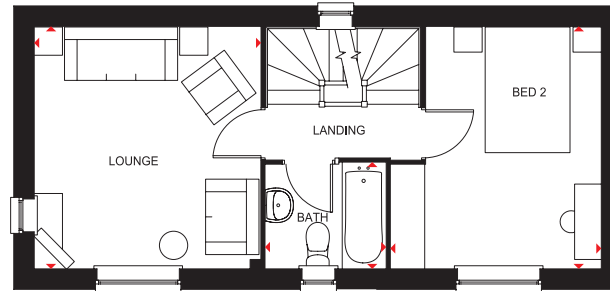
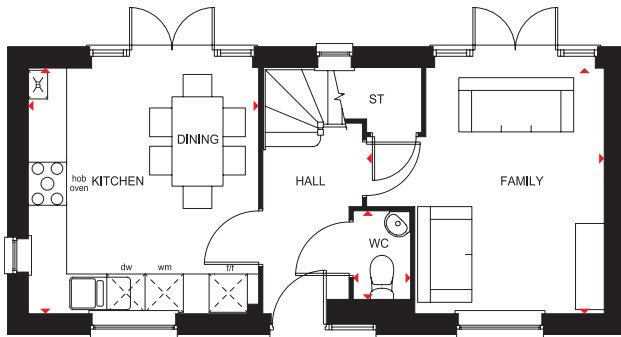
WHERE QUALITY LIVES

THE BRAMPTON

THREE BEDROOM HOME

Key

B	Boiler	f/f	Fridge/freezer space	◀▶	Dimension location
ST	Store	wm	Washing machine space		
CYL	Cylinder	dw	Dishwasher space		



Ground Floor

Family	3860 x 3700 mm	12'8" x 12'2"
Kitchen/Dining	3860 x 3587 mm	12'8" x 11'9"
WC	1588 x 849 mm	5'2" x 2'9"

First Floor

Lounge	3860 x 3583 mm	12'8" x 11'9"
Bedroom 2	3860 x 3333 mm	12'8" x 10'11"
Bathroom	1675 x 1879 mm	5'6" x 6'2"

Second Floor

Bedroom 1	3860 x 4817 mm	12'8" x 15'9"
En suite	1563 x 2290 mm	5'1" x 7'6"
Bedroom 3	2771 x 3860 mm	9'1" x 12'8"

All images used are for illustrative purposes. These and the dimensions given are illustrative for this house type and individual properties may differ. Please check with your Sales Adviser in respect of individual properties. We give maximum dimensions within each room which includes areas of fixtures and fittings including fitted furniture. These dimensions should not be used for carpet or flooring sizes, appliance spaces or items of furniture. All images, photographs and dimensions are not intended to be relied upon for, nor to form part of, any contract unless specifically incorporated in writing into the contract. 378497

