

# THE ELSWORTH

FOUR BEDROOM HOME



Individual plots may vary, please speak to the Sales Adviser



The Elsworth is a spectacular three storey, four bedroom home. The ground floor features an open-plan kitchen with family and dining areas. French doors open onto the garden, and along with two roof windows flood, this free-flowing space with light.

The master bedroom is located on the first floor and benefits from an en suite. This floor also includes the lounge, a further double bedroom and shower room. The second floor has a family bathroom along with another two double bedrooms.



DAVID WILSON HOMES

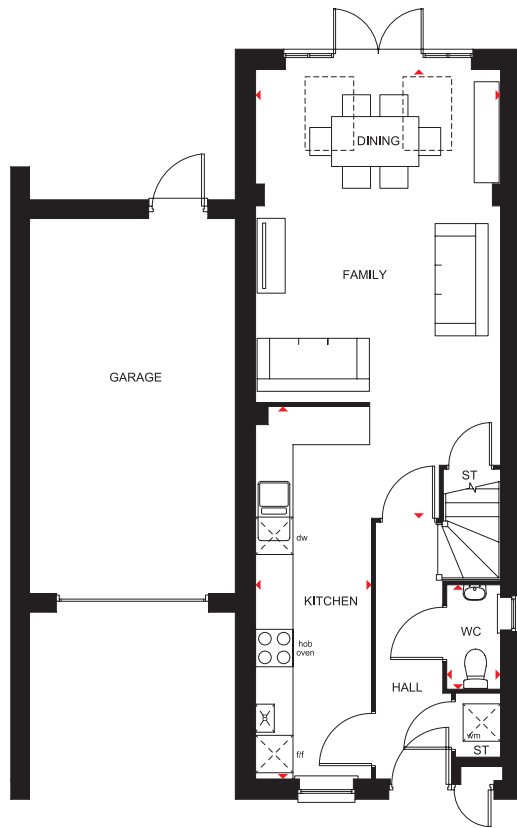
WHERE QUALITY LIVES

# THE ELSWORTH

FOUR BEDROOM HOME

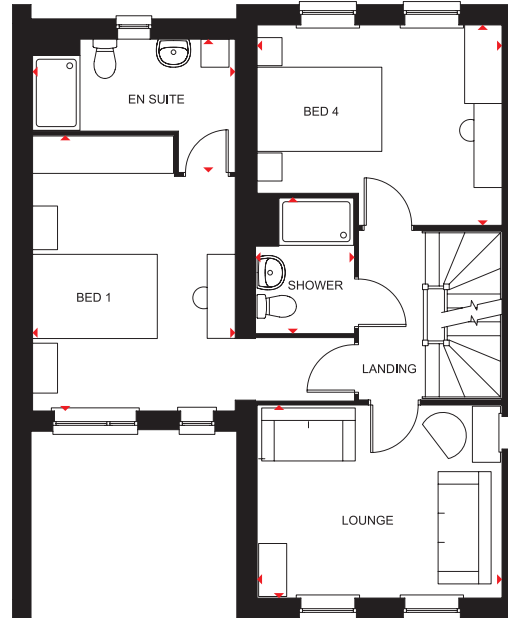
## Key

B	Boiler	f/f	Fridge/freezer space	◀▶	Dimension location
ST	Store	wm	Washing machine space		
CYL	Cylinder	dw	Dishwasher space		



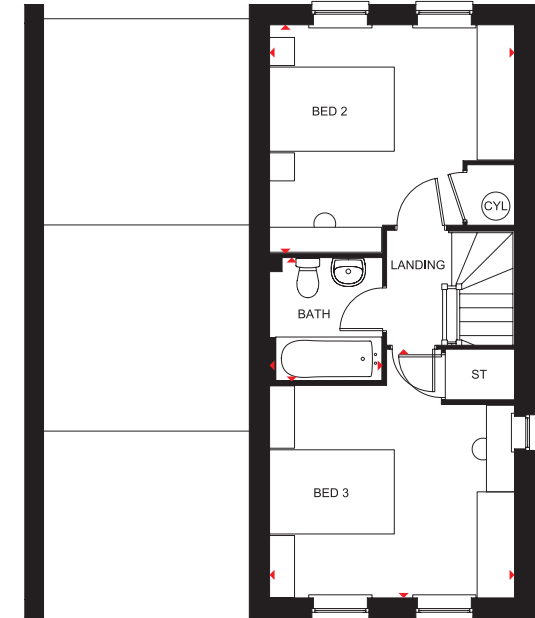
### Ground Floor

Kitchen	1834 x 5949 mm	6'0" x 19'6"
Family/Dining	3938 x 7172 mm	12'11" x 23'6"
WC	1624 x 848 mm	5'4" x 2'9"



### First Floor

Lounge	3938 x 3071 mm	12'11" x 10'1"
Bedroom 1	3250 x 4400 mm	10'8" x 14'5"
En suite	3250 x 2113 mm	10'8" x 6'11"
Bedroom 4	3938 x 3189 mm	12'11" x 10'5"
Shower	2138 x 1538 mm	7'0" x 5'0"



### Second Floor

Bedroom 2	3938 x 3645 mm	12'11" x 11'11"
Bedroom 3	3938 x 3964 mm	12'11" x 13'0"
Bathroom	1937 x 1788 mm	6'4" x 5'10"

All images used are for illustrative purposes. These and the dimensions given are illustrative for this house type and individual properties may differ. Please check with your Sales Adviser in respect of individual properties. We give maximum dimensions within each room which includes areas of fixtures and fittings including fitted furniture. These dimensions should not be used for carpet or flooring sizes, appliance spaces or items of furniture. All images, photographs and dimensions are not intended to be relied upon for, nor to form part of, any contract unless specifically incorporated in writing into the contract. 378493

