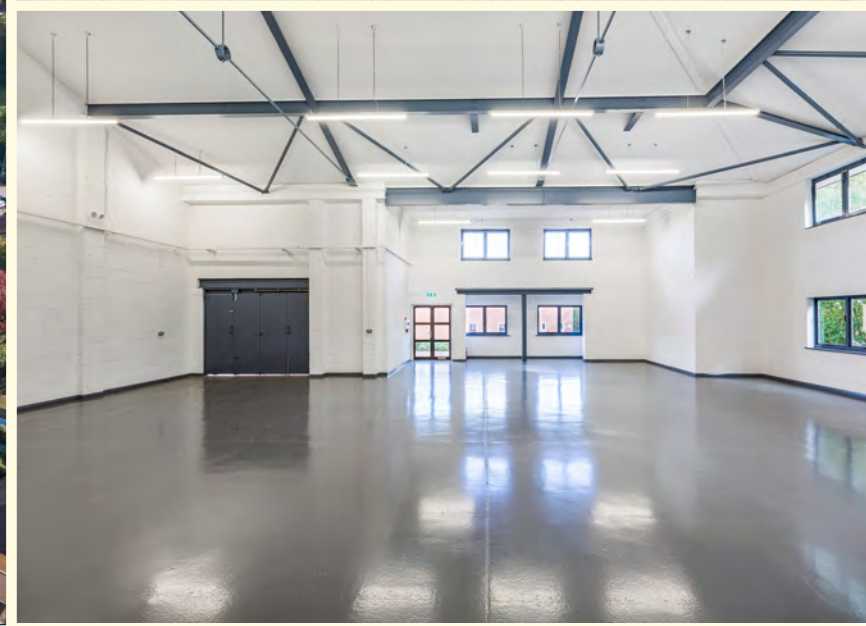


# drakes mews

BUSINESS CENTRE

CROWNHILL | MILTON KEYNES



Workshop/storage units To Let  
670–2,433 sq ft (62–226 sq m)

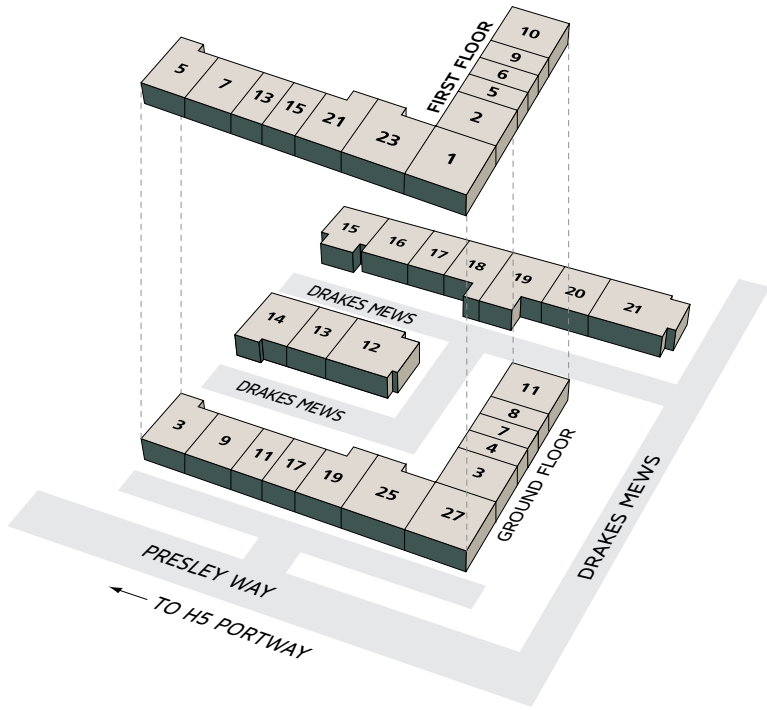
- > Loading Doors
- > Excellent transport links
- > WCs
- > CCTV



## Location

Milton Keynes is located at the heart of the UK and is the centrepiece between London and Birmingham, Oxford and Cambridge. The town is easily accessible from the M1 (Junctions 13-14) which provides outstanding communication links to the motorway network and key locations around the UK.

Drakes Mews Business Centre is located on Crownhill, approximately 1.5 miles west of Central Milton Keynes and benefits from excellent access to the A5, with the M1 motorway (Junction 14) within 5 miles drive.



## Overview

Drakes Mews Business Centre offers a mix of office and small workshop/storage units occupied by a variety of businesses. Located within an established business park, and within a short drive from Central Milton Keynes, with excellent access to the A5, and the M1 Motorway.

## Description

Drakes Mews Business Centre offers small workshop/storage units, benefiting from bi-folding loading doors, WC's and independent entrances, good natural light and shared on-site parking areas.

See availability schedule for more information.



## Terms

The units are offered on effective full repairing and insuring terms.

## EPC

Available on request.

## Legal Costs

Each party will be responsible for their own legal costs.

## Viewing

For viewing and further information please contact:



ADDRESS	DESCRIPTION	SIZE		QUOTING RENTAL (£/PAX)	EPC RATING	AVAILABILITY
		SQ FT	SQ M			
25 Presley Way	Ground Floor Storage/Office	2,239	208	17,912	D 98	Available
13 Drakes Mews	Industrial Unit	1,249	116	9,992	E 104	Under offer
14 Drakes Mews	Industrial Unit	2,241	208	18,104	C 58	Available
15 Drakes Mews	Business Unit	2,433	271	21,897	D 80	Under offer

Prices are quoted exclusive of VAT. Prospective occupiers are advised to check the rates payable by contacting the Local Rating Authority, Milton Keynes Council on 01908 691 691.

**Enquiries**

Paul Davies  
01908 202 196  
[paul.davies@bidwells.co.uk](mailto:paul.davies@bidwells.co.uk)

# INDUSTRIAL & STUDIO SPACE DRAKES MEWS BUSINESS CENTRE CROWNHILL MILTON KEYNES TO LET